

KD-Validated Anti-Glutathione Peroxidase 1 Rabbit Monoclonal Antibody
Rabbit monoclonal antibody
Catalog # AGI1818**Specification****KD-Validated Anti-Glutathione Peroxidase 1 Rabbit Monoclonal Antibody - Product Information**

Application	WB, FC, ICC
Primary Accession	P07203
Reactivity	Rat, Human
Clonality	Monoclonal
Isotype	Rabbit IgG
Calculated MW	Predicted, 22 kDa, observed, 20 kDa kDa
Gene Name	GPX1
Aliases	GPX1; Glutathione Peroxidase 1; Cellular Glutathione Peroxidase; Selenoprotein GPX1; EC 1.11.1.9; GSHPx-1; EC 1.11.1; GSHPX1; GPx-1; GPXD
Immunogen	A synthesized peptide derived from human Glutathione Peroxidase 1

KD-Validated Anti-Glutathione Peroxidase 1 Rabbit Monoclonal Antibody - Additional Information

Gene ID 2876

Other Names

Glutathione peroxidase 1, GPx-1, GSHPx-1, 1.11.1.9, Cellular glutathione peroxidase, Phospholipid-hydroperoxide glutathione peroxidase GPX1, 1.11.1.12, GPX1 (http://www.genenames.org/cgi-bin/gene_symbol_report?hgnc_id=4553)
[HGNC:4553](#))

KD-Validated Anti-Glutathione Peroxidase 1 Rabbit Monoclonal Antibody - Protein Information**Name** GPX1 ([HGNC:4553](#))**Function**

Catalyzes the reduction of hydroperoxides in a glutathione- dependent manner thus regulating cellular redox homeostasis (PubMed: [11115402](http://www.uniprot.org/citations/11115402), PubMed: [36608588](http://www.uniprot.org/citations/36608588)). Can reduce small soluble hydroperoxides such as H₂O₂, cumene hydroperoxide and tert-butyl hydroperoxide, as well as several fatty acid-derived hydroperoxides (PubMed: [11115402](http://www.uniprot.org/citations/11115402), PubMed: [36608588](http://www.uniprot.org/citations/36608588)). In platelets catalyzes the reduction of 12-hydroperoxyeicosatetraenoic acid, the primary product of the arachidonate 12-lipoxygenase pathway (PubMed: [11115402](http://www.uniprot.org/citations/11115402)).

Cellular Location

Cytoplasm {ECO:0000250|UniProtKB:P11352}. Mitochondrion {ECO:0000250|UniProtKB:P11352}

Tissue Location

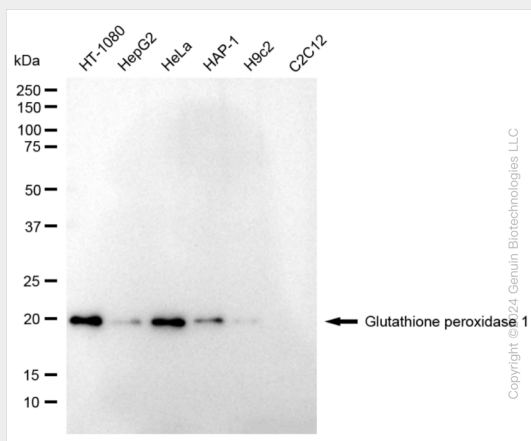
Expressed in platelets (at protein level).

KD-Validated Anti-Glutathione Peroxidase 1 Rabbit Monoclonal Antibody - Protocols

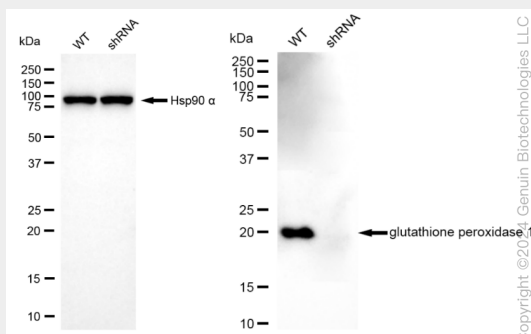
Provided below are standard protocols that you may find useful for product applications.

- [Western Blot](#)
- [Blocking Peptides](#)
- [Dot Blot](#)
- [Immunohistochemistry](#)
- [Immunofluorescence](#)
- [Immunoprecipitation](#)
- [Flow Cytometry](#)
- [Cell Culture](#)

KD-Validated Anti-Glutathione Peroxidase 1 Rabbit Monoclonal Antibody - Images

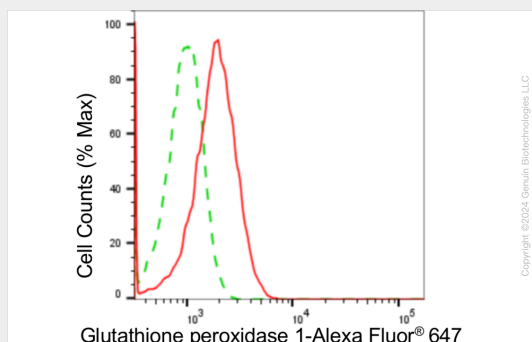


Western blotting analysis using anti-glutathione peroxidase 1 antibody (Cat#AGI1818). Total cell lysates (30 µg) from various cell lines were loaded and separated by SDS-PAGE. The blot was incubated with anti-glutathione peroxidase 1 antibody (Cat#AGI1818, 1:5,000) and HRP-conjugated goat anti-rabbit secondary antibody respectively.

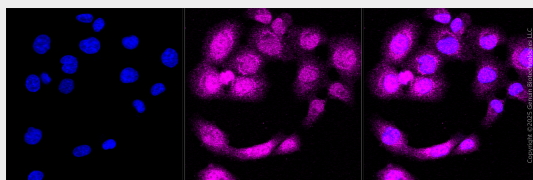


Western blotting analysis using anti-glutathione peroxidase 1 antibody (Cat#AGI1818). Glutathione peroxidase 1 expression in wild type (WT) and glutathione peroxidase 1 (GPX1) shRNA knockdown (KD) HeLa cells with 20 µg of total cell lysates. Hsp90 α serves as a loading control.

The blot was incubated with anti-glutathione peroxidase 1 antibody (Cat#AGI1818, 1:5,000) and HRP-conjugated goat anti-rabbit secondary antibody respectively.



Flow cytometric analysis of glutathione peroxidase 1 expression in HT-1080 cells using anti-glutathione peroxidase 1 antibody (Cat#AGI1818, 1:2,000). Green, isotype control; red, glutathione peroxidase 1.



Immunocytochemical staining of HT-1080 cells with anti-Glutathione peroxidase 1 antibody (Cat #AGI1818, 1:1,000). Nuclei were stained blue with DAPI; Glutathione peroxidase 1 was stained magenta with Alexa Fluor® 647. Images were taken using Leica stellaris 5. Protein abundance based on laser Intensity and smart gain: Medium. Scale bar, 20 µm.